

THE INLAND RAILWAY

Bill Palazzi and Adrian Megaw



In 2008, the Federal Government commissioned the Australian Rail Track Corporation (ARTC) to conduct a study to determine the economic benefits and likely success of a new multi-billion dollar standard gauge inland railway between Melbourne and Brisbane.

At present, the only north-south rail corridor in eastern Australia runs along the coastline via Sydney. A view has been held by various parties that an inland route through the Central West of NSW has the potential to slash the time it takes to move freight from Melbourne to Brisbane by rail. This would then improve the competitive position of rail transport on this corridor, resulting in a shift of freight from road to rail.

This presentation will cover the work thus far on the Inland Rail Alignment Study. The study team has analysed a significant number of different alignments, representing over 50,000 different alternatives between Melbourne and Brisbane, to select two options that represent the most promising alignments. These two options are currently being analysed and refined, in conjunction with the economic and financial analysis, the optimum alignment for the corridor.

Bill Palazzi has worked in the rail industry for over 20 years, starting as a cadet signalling engineer in the NSW railways. Bill is now Rail Section Executive of PB Australia, where he leads PB's rail business and team of rail engineers throughout Australia and New Zealand

Adrian Megaw is a project manager with over 15 years experience in development rail infrastructure and rollingstock projects in Australia and the United Kingdom.

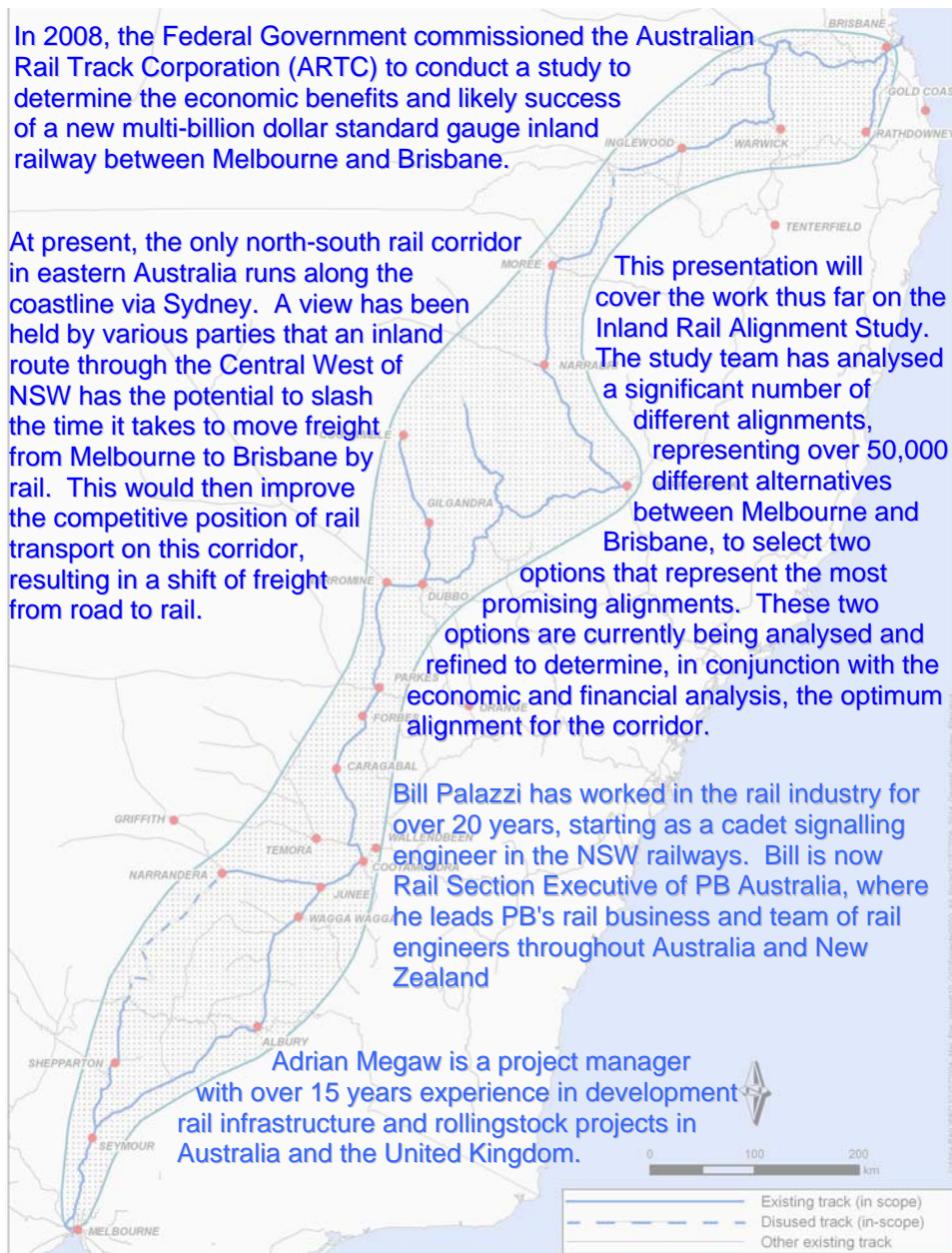


Photo: Mike Martin

RTSA:

for all who have an interest in railway technology and management

TECHNICAL PRESENTATION

Hawken Auditorium
Engineers House
447 Upper Edward St
Spring Hill

WHEN

Wednesday
24th March 2010
17:30 for
18:00 Presentation

REGISTRATION

EA QLD Division
3832 3749
qld@engineersaustralia.org.au

The Railway Technical Society of Australasia Queensland Chapter

A Technical Society of Engineers Australia & IPENZ
11 National Circuit, Barton ACT 2600
Tel: 02 6270 6569 Fax: 02 6273 2358
www.rtsa.com.au

